

SW-L2 Smart switch for two lights without a neutral

Model number - SW-L2

This smart switch is designed to control one or two lights. It can be installed without changing infrastructure and threading wires and does not require a neutral wire. Each gang can be configured to turn on/off, Dimmer switch, a variety of scenarios, and a timed switch (for example in a stairwell). The configuration of the switch is determined via touch configuration.

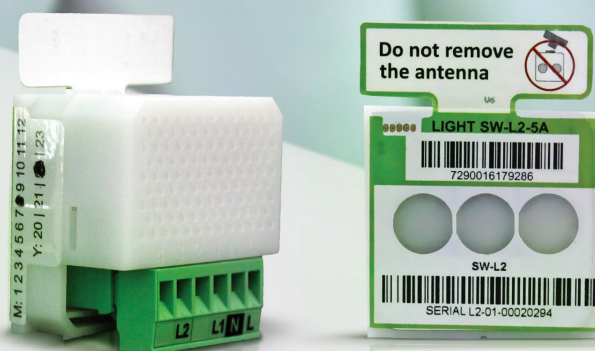
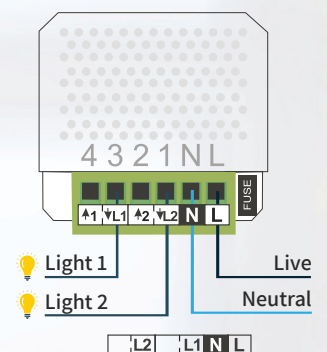
Technical Information // Module for up to 2 lights

Power supply	100-240V 50-60 Hz
Load range	0-1100W
Transmission frequency	MHz 433.5-434.5
Transmission range	up to 100M
Functionality	on/off, two way switch, scenario switch, dimmer switch, timed switch, double scenario switch
Background lighting	Shade of color and brightness can be set in the application
Current sensor	0-30A
Protections and safety	Triple protection: 1// Thermal fuse for protection against overheating. 2// Current sensor protection. 3// 5A fuse protection
Dimensions	height 44 mm, width 44 mm, depth 30 mm

Installation Instructions

Connect the live wire **to L**
Connect the neutral wire **to N** (optional)
Connect the return live wires **to 1 and 3**

- This switch does not require a neutral.
- If there is a neutral it is advisable to connect it.
- It is recommended to connect a neutral for a dimmer switch



SW-L2 Smart switch for two lights without a neutral

Additional advanced functions

Lock mode

This will disable the physical switch, however the switch will still operate from the application. It is also possible to create a scenario that can lock a group of switches. You are also able to create a timer that will operate the lock scenario.

Proximity sensor

This will turn on background lighting in the switch when your hand nears the panel.

Sensitivity

This allows you to set the sensitivity of the touch sensor.

Advanced button

By clicking this button in the application you can see the following data:

- **RSSI-EU** // Signal strength from the central unit to the switch. Signal over 100 is excellent reception. Signal 80-100 ok. Lower than 80 is bad.
- **RSSI-AP** // Signal strength from the switch to the central unit. Signal over 100 is excellent reception. Signal 80-100 ok. Lower than 80 is bad.
- **CURRENT** // The current passing through the switch. Measured by the current sensor.
- **VERSION** // Software version of the switch.

Double scenario

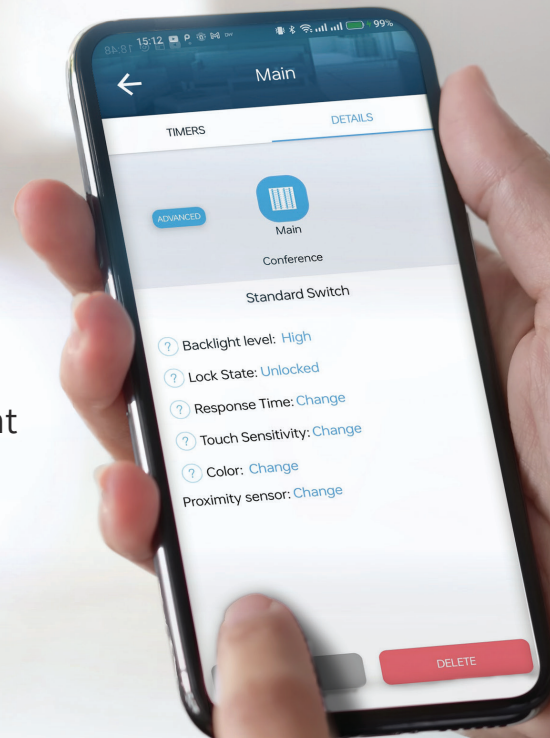
Use one switch to control two separate scenarios.

Response time

Change the length of time needed to touch the switch until it operates. Useful when you want to prevent accidental touches from triggering the switch. For example, a delayed press on a scenario to turn off multiple switches.

Colour

Change the on/off display colour of the switch



For more details - go to the tutorial section on the website

www.SwitchBee.com

CONFIGURABLE

○
Multifunctional configuration -
One module fits All

○
Set - Backlight
Color and intensity

○
Set -
Proximity sense

○
Set -
Touch Sensitivity

○
Set -
Response time

○
Set -
Lock

Standard switch= On/Off

Simple turn 'on or off' of lighting or electrical appliance

Scenario Switch

The ability to group multiple smart devices and control them together

Dimmer Switch

The ability to dim a dimmable light

Two Way Switch

The ability to set up a two way switch (more than one per light) without wiring

Timed Switch

The ability to set activation time (From 1 second to 7 hours)

